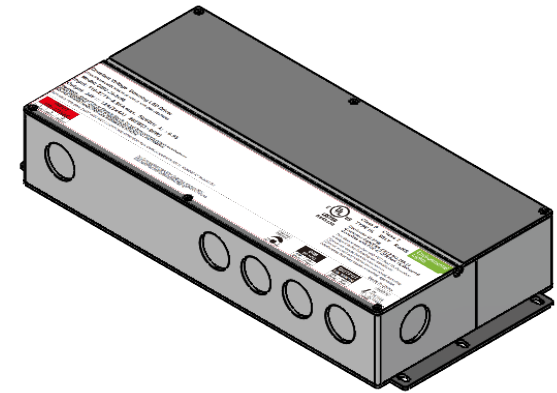
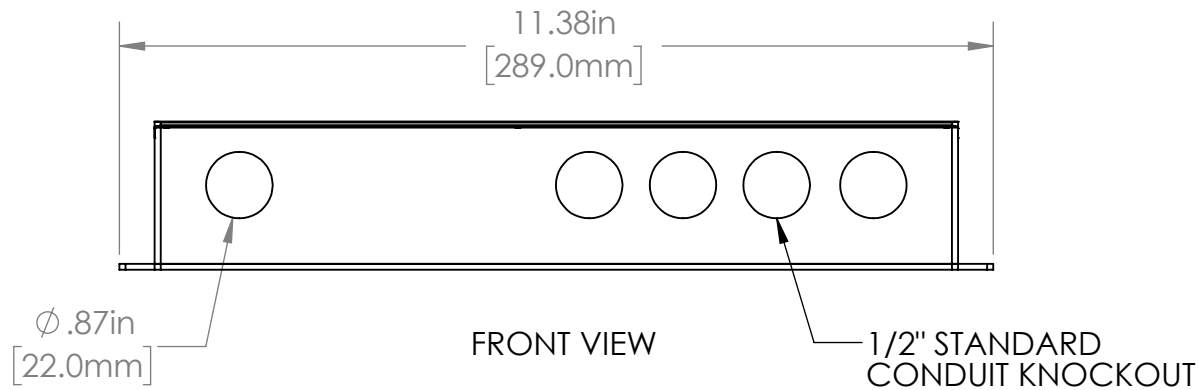


TOP VIEW

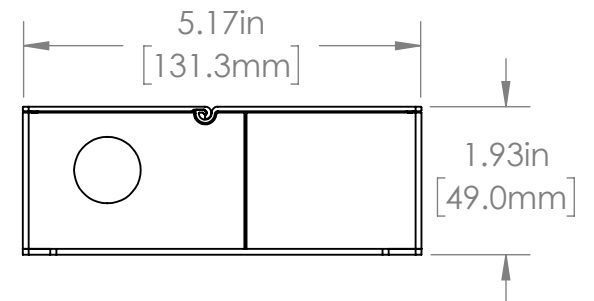


ISO VIEW
SCALE 1:4



FRONT VIEW

1/2" STANDARD
CONDUIT KNOCKOUT



SIDE VIEW

DRIVER SPECIFICATIONS		TOLERANCES		PROPRIETARY AND CONFIDENTIAL		NAME	DATE	<div>Environmental Lights™</div> <div>EL PART NO. DMU-24-3x96 - A1</div> <div>SCALE: 2:5 WEIGHT: SHEET 1 OF 1</div>		REV A1
NOMINAL INPUT VOLTAGE	110-277VAC			THE INFORMATION CONTAINED IN THIS DRAWING IS THE SOLE PROPERTY OF ENVIRONMENTAL LIGHTS. ANY REPRODUCTION IN PART OR AS A WHOLE WITHOUT THE WRITTEN PERMISSION OF ENVIRONMENTAL LIGHTS IS PROHIBITED.	DRAWN BY J. PEREZ COMMENTS:	J. PEREZ	5/11/2023			
MAX WATTAGE	288W (3x96W)									
NOMINAL VOUT	24VDC									
IP RATING	-									
CERTIFICATION	UL,cUL, CSA, FCC, ROHS									